

Cultivation instructions:
Quick Lock side suitcase makers Suzuki SV650

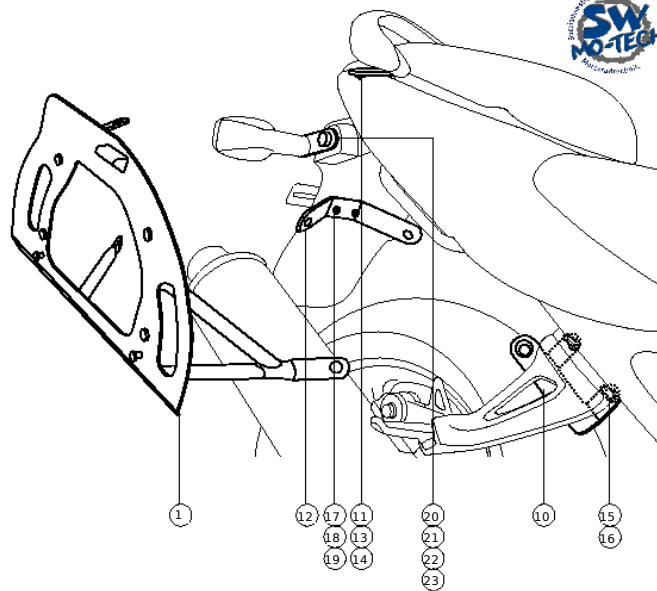
Dear SW MO-TECH Client

This high-quality luggage carrier can be after the initial installation in less than a Quick minute closures without tools to dismantle and re-attach. It is precisely fit his constructive characteristics and therefore easy to assemble. Through barely visible fixings, the look of the vehicle and driving characteristics is not disturbed. The Quick-Lock connectors are Eindrehen by the highway closures in a clockwise attached. It must be easier to put pressure on the head of the Schnellverschlusses exercised. Turn the quick release cam on the bus until it felt place. Only in this way can connect ensured and accidents can be avoided.



Contents of the pack

Position	Title	No.
1st	Plate winners right / left	2
2nd	Fastener	6
3rd		
4th		
5th		
6th		
7th		
8th		
9th		
10th	Footpeg mounting plate: KFT.05.058.001	2
11st	Mounting plate above: KFT.00.058.003	2
12nd	Cross connectors back: KFT.05.058.002	1
13rd	Female distance: As-20; Di-8; 2; 19	2
14th	Allen screw M8x35; DIN 912	2
15th	U-disc A8, 4; DIN 125	4
16th	Allen screw M8x20; DIN 912	4
17th	Mother self M6; DIN 985	2
18th	Hexagon screw M6x20; DIN 933	2
19th	U-disc A6, 4; DIN 9021	4
20th	Mounting plate flasher rts / lks: KFT.05.058.004	2
21st	Allen screw M10x25; DIN 6912	2
22nd	Self nuts M10; DIN 985	2
23rd	U-disc A10, 5; DIN 9021	2

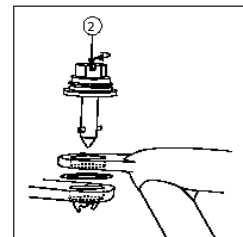


Assembly instructions (Note: cultivation instructions carefully before assembly.)

- 1st Inserting the suitcase fasteners according to the instructions in the adapter kit
 - All elements must be mounted to the outside (right and left side panel).
- 2nd Remove the Befahrerhaltebügel and seating.
- 3rd Solve the Kunststoffhecks and remove the screws on the passenger's foot rest brackets.
- 4th Tightening the passenger's foot rest holder together with the mounting plates footpeg with the M8x20 screws (Pos.16). Ordering: foot rest holder; mounting sheet; screws.
 - Screw only slightly.
- 5th Befahrerhaltebügel of screwing together with the mounting plates above distance jack (Item 13) between the frame and mounting plate use bolts (Item 14).
- 6th Side institution through rapid closures initially assembled at the two anchorage points fixierenren. Then the cross-connector back, and also fix.
- 7th Holes in the number plate carrier use and cross-connector is screw. (Pos 17,18,2 x19). All-tighten screws.
- 8th Loosen the side winners.

Blinker laying:

- 1st Loosen the connector of the Blinkers.
- 2nd Remove the two flashers.
- 3rd Screwing the plate to transfer flasher (Pos 19-25).
- 4th Attach the flasher with the original nuts.
- 5th Cable connectors on the rear in the distribution and connect.
- 6th Functional control of the electrical system.
- 7th Ordnungsgemäßes assembling the panel and seating.
- 8th All-tighten screws.



Note: Important Information:

Not without suitcase with mounted side plates.
 If you go without luggage, side panels dismantled

Maximum payload of Case:
 according to manufacturer's specifications (Givi Fa) 10 kg suitcase incl.

For the dismantling of the Quick Lock Cases carrier system simply a coin or a screw dreher the quick connectors solve and side makers remove!

The SW MO-TECH team wishes you a good trip!